

Hermes



The fully
integrated
Urodynamic
System



ALBYN MEDICAL
Smart Medical Group

Hermes

The fully Integrated Urodynamic Solution

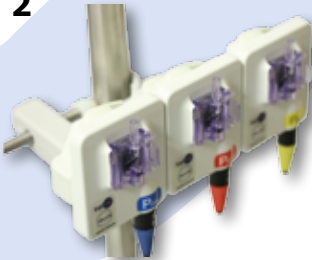
1



1 Filling Pump

- User friendly software control.
- Range from 0ml/min to 120ml/min.
- Automatic priming of the pump tubing set.

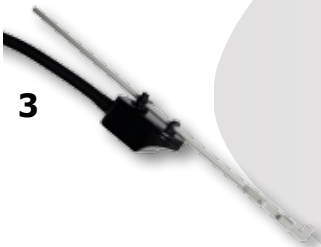
2



2 Pressure Transducers

- 3 colour coded pressure transducers.
- Urodynamic set for convenient flushing of the catheters.

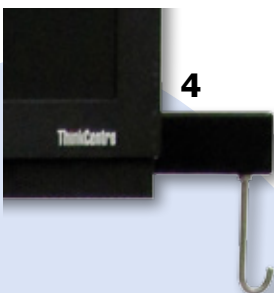
3



3 Puller

- Flexible, robust and easy to adapt to any position.
- Removable and sterilisable catheter holder to prevent cross contamination.

4



4 Filling Sensor

- Reports exact volume infused:
- Compatible with:
 - Different contrast media.
 - Catheters with different lumen sizes.
- Avoids pump infusion errors.

5



5 Adjustable Pole

- Secure and handy fixing system for catheters and pump tubing.
- Quick and easy adjustment.
- Hygienic.

6



6 EMG

- High Quality Signal.
- Wireless system allows free patient movement.
- Low electronic noise.
- Rechargeable.



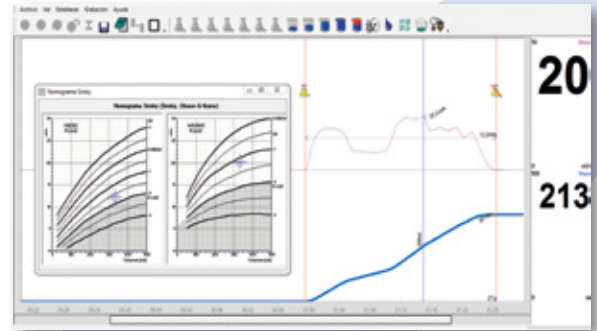


7



8

9/10

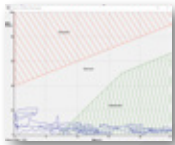


7/8 Flowscale

- Wireless communication allowing privacy for the patient.
- High sensitivity with small flow-rates.
- Replaceable hygienic covers.
- Tailored for micturition chair or stand.

11

12

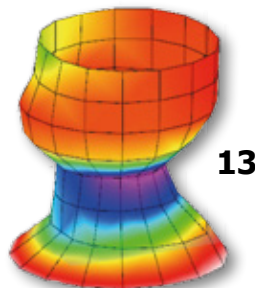


11/12 Nomograms / Reports

- Full range of Nomograms for adults and paediatric studies.
- Customised investigations and reports.

13 Anorectal Manometry

- 4 or 5 Pressure channels. Vector Volume.
- Integrated air pressure pump for accurate perfusion.
- Foot pedal control.
- Configurable studies (RAIR, Pressure Profile, Fatigue Index, Sensitivity).



13

9/10 Database / Analysis

- SQL Database engine ensures fast access to all studies:
- Complete analysis as defined by the ICS.
- User designed protocols and reports.
- NDL Technology (No Data Loss).

Hermes

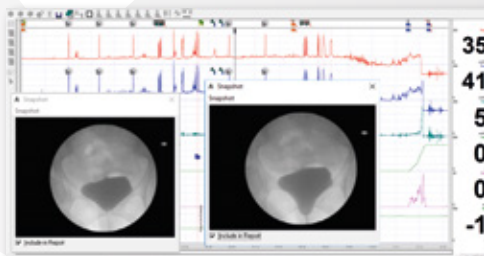
The integrated design of the Hermes allows a fast learning curve. It is a highly efficient device for low cost investment.

After sales service and the quality of our catheters ensure accurate results.

Albyn Medical complies with the highest quality standards.

14 Video Urodynamics

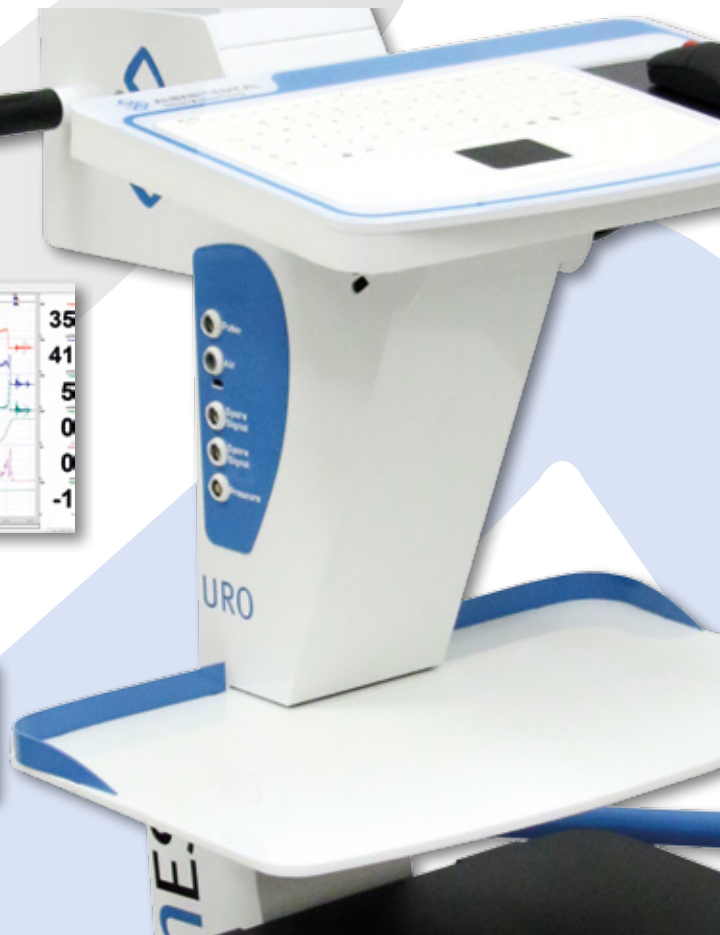
- High Resolution Processing.
- Available for analogue or digital x-ray outputs.
- Real time recording and synchronisation.



15

15 Network and HIS

- Wireless or cable connection to Hospital Network.
- DICOM compatible - Storage & Worklist.



Hermes

Urodynamics focused on the Highest Standards of Quality

Workstation

- Wireless connection of the Flowscale and EMG to the main unit.
- Availability of all current nomograms and ICS terminology.
- Hygienic - easy to clean, with waterproof keyboard, and specially designed flowscale with hygienic, replaceable covers. Removable and sterilisable UPP catheter holder.
- Optional anorectal manometry and video urodynamics.
- Optional integration with the hospital information system.

Integration

- Easy integration with current investigation room lay-out.
- Possible to be shared by different departments (Urology, Gynaecology) to reduce the effective cost per patient. Data may be kept separate.

Quality

- Albyn Medical guarantees the Highest Quality Standards in all of its products.
- ISO 13845, CE Mark.

Name: Hermes – Urodynamic System. **Indications:** To perform Urodynamic and Anorectal Manometry studies. **Class:** Iia. **Notifying Body:** SGS. **Manufacturer:** Albyn Medical SL. **Caution:** Please read carefully the Instruction for Use Manual prior to start using the equipment. **Version:** HE_E_1

Other products manufactured and distributed by Albyn Medical



Albyn Medical authorised local distributor

Albyn Medical S.L.
Pol. Ind. Cordovilla, Calle D. Nº1
31191 Cordovilla
Navarra (España)

Tel.: +34 948 293 324
Fax.: +34 948 293 418
Web: www.albynmedical.com



Technical changes and mistakes reserved.
Images may show non standard options.