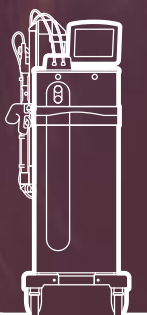


Quanta System

Youlaser MT



Youlaser MT

*The New Reference Laser
for Anti-Aging and Beyond*

Quanta System is proud to introduce a new extremely innovative device for skin rejuvenation and scar treatment. **Youlaser MT** is the first and only laser that, due to the proprietary **Mixed Technology**, is able to combine the golden standards of **10600 nm**, and **1540 nm** wavelengths in a sequential or simultaneous fractional emission.

These two wavelengths emitted together maximize the advantages of each laser, improving the results in just one session. Aged skin with wrinkles and pigmentations, scars as well as vaginal atrophy, are best treated by **Mixed Technology** to establish a positive synergy between the two lasers for advanced results with almost no patient down-time. No more trouble when choosing fractional ablative or non-ablative lasers.

Welcome to the **Youlaser MT** world.

Nowadays dermatologist and aesthetic practitioners know the advantages and the limits of ablative and non-ablative fractional lasers. Ablative lasers offer faster results but cannot be applicable to all the patients because of their long down-time and higher risk of pigmented disorders. Non-ablative lasers are much more tolerated by any skin type and can be used on almost every patient, but need repeated sessions to achieve the desired results.

Youlaser MT overcomes these limits by combining **CO2 ablative** and **GaAs non-ablative** lasers. These two lasers can work separately or in an exclusive Mixed Modality allowing practitioner to offer the best treatment to each patient.

Youlaser MT permits to treat the skin with one of the two wavelengths or one of the three Mixed Treatment Modalities available, to find the right balance between results and down-time.

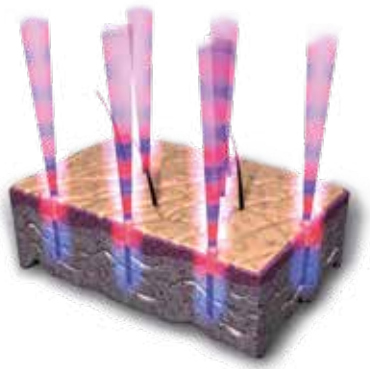


This device can also be used as an advanced laser for dermatological surgery.

The very fast CO2 laser of **Youlaser MT** is able to work **up to 2000 Hz** and to deliver at the same time microsecond pulses for a perfect control of cutting and coagulation rate. **Youlaser MT** is a “maintenance-free” laser, an important feature to keep the running cost at the lowest level.

Mixed Technology

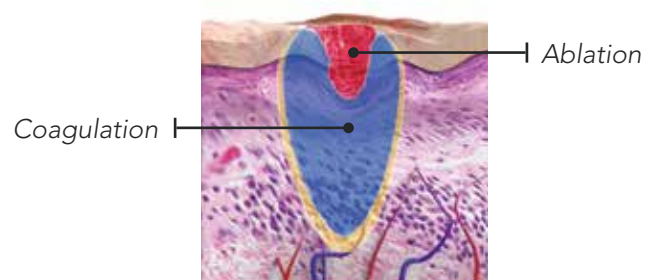
Youlaser MT can deliver 1540 nm and 10600 nm lasers in the same micro-dot with sequential or simultaneous emissions. This is important to get a tunable balance of ablation and coagulation depth for new and more effective treatment standards.



Optisim

Optisim is an innovative feature that shows a simulation of the pattern generated by the laser before starting the treatment, for a fine adjustment of the laser parameters.

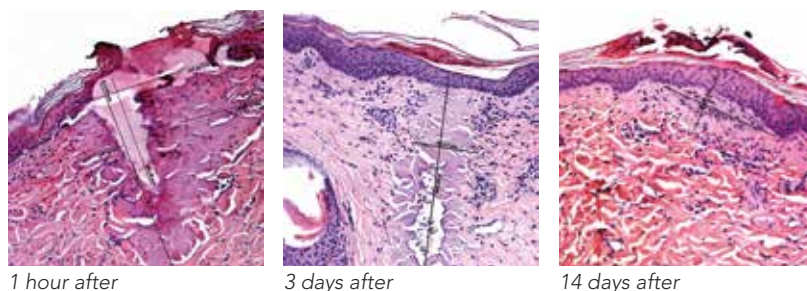
More treatment precision for more predictable results.



Histology Results

Youlaser MT produces a fractional pattern with spaced micro-dots of coagulated and ablated tissue. Used in Mixed Mode, the wound dimension is related to the total energy delivered by both lasers. The histology results show complete skin reepithelization in 3 days.⁽¹⁾

The **Mixed Mode** improves outcomes in one session on acne scars and wrinkles, producing effects similar to ablative treatments with almost no down-time for patients. Dermatologic surgery also benefits from using Mixed Mode due to higher precision of coagulation and ablation rates.



1540 nm mixed with 10600 nm

(1). In-vivo histopathological study of YouLaser MT interaction with the skin. A laser device emitting combined 1540 and 10600 nm wavelengths (2012) – Author: Paolo Sbano MD. Histology Report available upon request.

Shelase

The **vaginal atrophy** is the loss of the natural structural collagen thickness and form of the vaginal tissue and it may be caused by **aging** or **childbirth**.

Shelase is a dual laser procedure by GaAs 1540 nm and CO2 10600 nm for effective treatment of atrophy and laxity through the resurfacing of vaginal mucosa for a significant improvement in patient's quality of life, sexual satisfaction and an immediate return to normal activities.

It uses the Mixed Technology of Youlaser MT to perform an exclusive mixed laser treatment of the vaginal mucosa by non-ablative and ablative wavelengths at the same time.

The treatment is performed delivering two laser wavelengths in the vaginal tissue to stimulate contraction of mucosa and production of new collagen, to regain the normal vaginal elasticity.

Shelase is a unique procedure that reduces the ablation of mucosa during treatment while the non-ablative laser penetrates deep into the tissue to maximize the laser effect in a very gentle way, with no bleeding and no recovery time.

Indications

Atrophy and Laxity of the Vaginal Mucosa



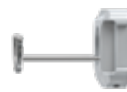
Speculum 9 cm



Speculum 12 cm



Vaginal probe



Vulvar tip



Vaginal ring



Before and After pictures



WRINKLES AND SKIN LAXITY *DOWN-TIME EVOLUTION - 5 DAYS - 60 DAYS*
Courtesy Paolo Sbano MD



ACNE SCARS *DOWN-TIME EVOLUTION - 7 DAYS - 12 DAYS*
Courtesy Emilio Bonizzoni MD



SCARS
Courtesy Paolo Sbano MD

Before and After pictures



SKIN RESURFACING

Courtesy Paolo Sbano MD



ACNE SCARS

Courtesy Paolo Sbano MD



RHINOPHYMA

Courtesy Paolo Sbano MD



RHINOPHYMA

Courtesy Paolo Sbano MD

Technical Specifications

LASER	CO ₂ and GaAS
Wavelengths (nm)	10600 and 1540
Power	Up to 30 W @ 10600 nm ; up to 8 W @1540 nm
Pulse modalities	CO ₂ (10600 nm) only, CW and pulsed GaAs (1540 nm) only, CW and pulsed CO ₂ and GaAs simultaneous, CW and pulsed CO ₂ and GaAs sequential pulsed
Pulse width (ms)	Fractional and Shelase mode: up to 20 ms @ 10600 nm; up to 20 ms @ 1540 nm ; Surgical mode: up to 100 ms @ 10600 nm; up to 100 ms @ 1540 nm
Spot size (fractional)	300 µm @ 10.6 µm - 350 µm @ 1540 nm with OptiScan and Shelase vulvar probe 600 µm @ 10.6 µm - 800 µm @ 1540 nm with Shelase vaginal probe
Spot size (surgical)	200 µm; 400 µm; 1000 µm
Stack mode (fractional and Shelase)	up to 5 pulses
Scanning area (fractional)	up to 1.8 x 1.8 cm
Repetition rate (surgical)	up to 2000 Hz @ 10.6 µm ; up to 1000 Hz @ 1540 nm
Aiming beam	650 nm < 4 mW; class 3R
Laser class	class 4 according to IEC 60825-1
Electrical requirements	115 Vac; 50/60 Hz; 1000 VA or 230 Vac; 50/60 Hz; 1000 VA
Dimensions and weight	580 mm (W) x 460 mm (D) x 1330 mm (H); 55 kg

Quanta System

This brochure is not intended for the U.S. market.
Certain Intended Uses/Configurations/Models/Accessories are not cleared for U.S.



*Nayel Medical is the exclusive distributor for
Quanta System Aesthetic Lasers in UAE*

DANGER - VISIBLE AND INVISIBLE LASER RADIATION

Avoid eye or skin exposure to direct or scattered radiation | Laser product: Class 4 | Aiming beam: Class 3R

Note: National local authorities may put restrictions to the parameters indicated in the table in the previous page, or may limit or remove certain intended uses. Specifications are subject to change without notice.



Quanta System S.p.A. – Via Acquedotto, 109, 21017 Samarate (VA) – Italy
© 2022 All rights reserved – quanta@quantasystem.com | www.quantasystem.com