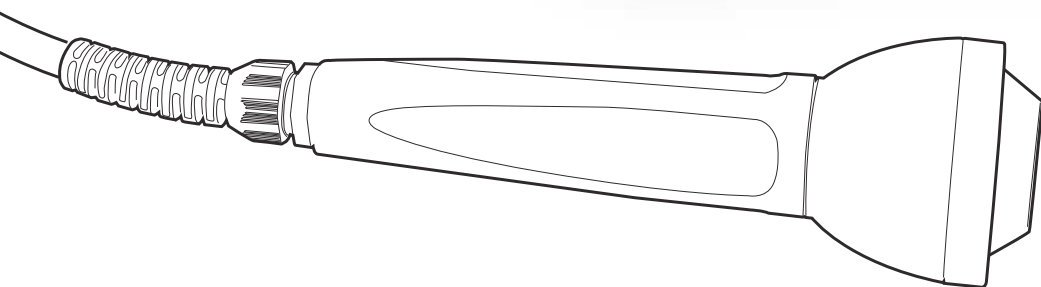
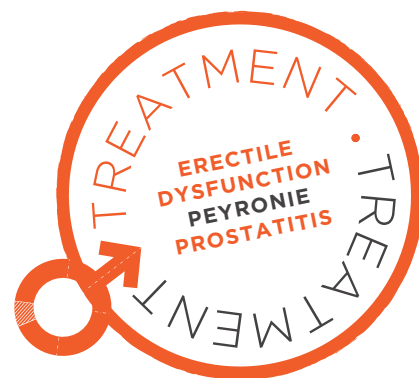


MODUS FOCUSED ESWT



FOCUSED SHOCKWAVE THERAPY

CAT.1.1.1, First Release Date: 23.02.2024
Rev.03, Revision Date: -





Touchscreen Interface of
Modus Focused ESWT
Shock Waves

MODUS FOCUSED ESWT

Low-Intensity Focused Model Shock Wave Therapy System

The focusing mechanism directs each shock to a specific point in the body. Focused ESWT is used in physiotherapy, orthopedics, veterinary medicine, and urology where it can be used to treat erectile dysfunction. Shock waves are used in the to initiate the neovascularization process in some parts of the body. New blood vessels are formed as a result of neovascularization.

As a result of increased penile blood flow with the formation of new vessels, the body's natural erection system recovers to its normal state.

Modus focused eswt



Modus Focused ESWT
Handpiece

> MODUS FOCUSED ESWT SHOCK WAVE THERAPY SYSTEM

> Modus Focused ESWT Shock Wave System is a non-invasive treatment method based on focusing shock waves on the desired area of the body via a liquid-filled silicone cap. This method increases vascularization in the area affected and 8 times the healing mechanisms of the play.

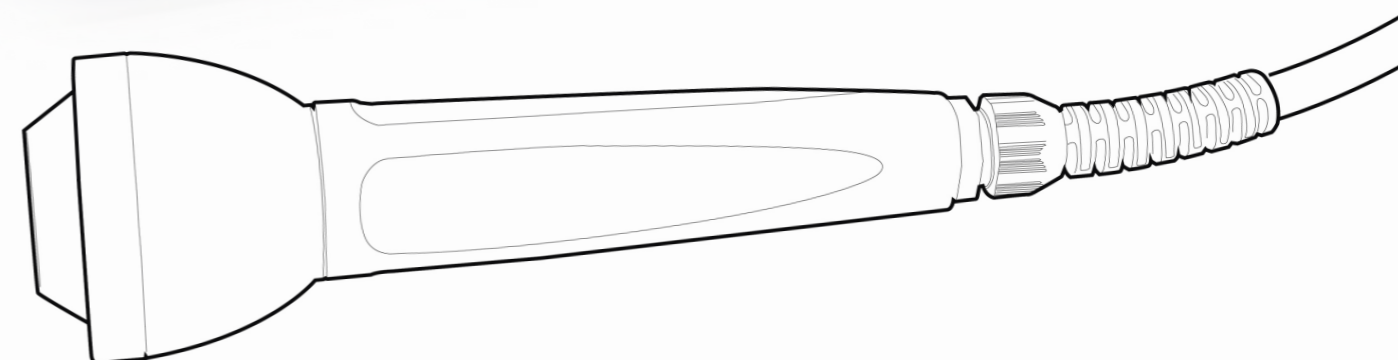
> Modus Focused ESWT provides impulses up to 4 Hz and 0.25mJ.

> The device provides ease of use with its colored touch screen technology. In addition, the parameters set during the treatment can be easily followed on the device screen and can be changed as desired during the treatment.

> Modus Focused ESWT device provides archive support to the user with its patient registration and follow-up menu.

> The system provides video and written support to the user with the ready-made treatment programs in its content. Different caps are available for different treatments.

> When the number of shock waves set at the beginning of the treatment with Modus Focused ESWT are reached, the system automatically stops and the user can intervene as desired.



MODUS FOCUSED ESWT HANDPIECE FEATURES

- > Full energy transmission to the selected anatomical treatment region
- > Lightweight and ergonomic handpiece
- > Easy mobility
- > Maintenance-free handpiece
- > Applicator head options with easy replacement according to use



**> MORE PENETRATION
DEPTH IS REACHED WITH
FOCUSED APPLICATOR HEAD**



Higher Energy Output



High Energy Depth

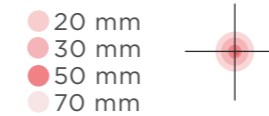


Fast and Effective
Treatments

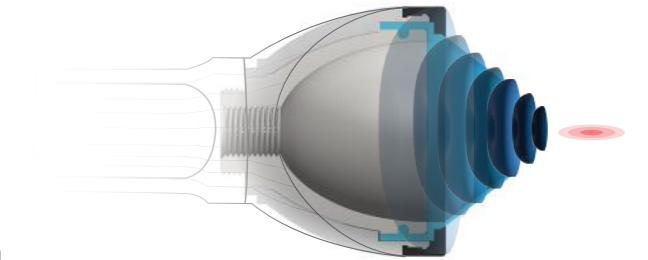
APPLICATOR HEADS FOR UROLOGICAL TREATMENT

F-50 Head

Penetration Depths



Usage Area: Erectile Dysfunction, Peyronie, Prostatitis

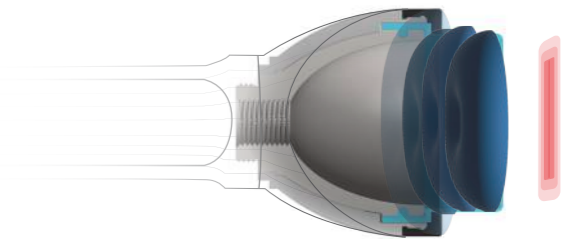


F-L50 Head

Penetration Depths

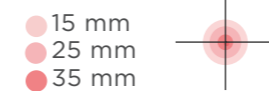


Usage Area: Erectile Dysfunction, Peyronie

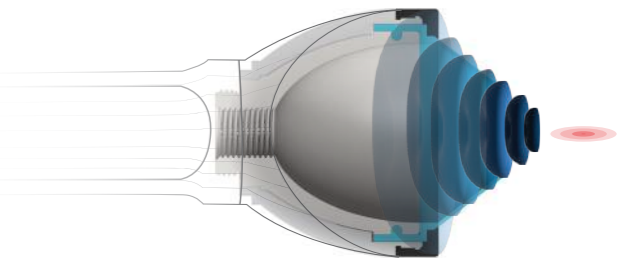


F-35 Head

Penetration Depths

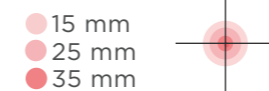


Usage Area: Peyronie

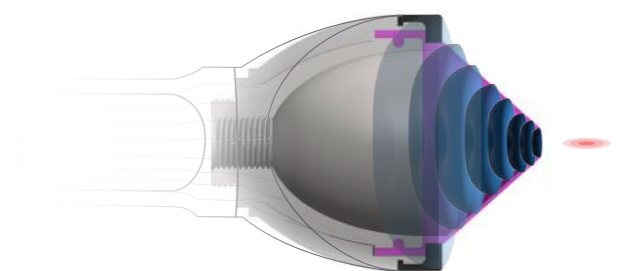


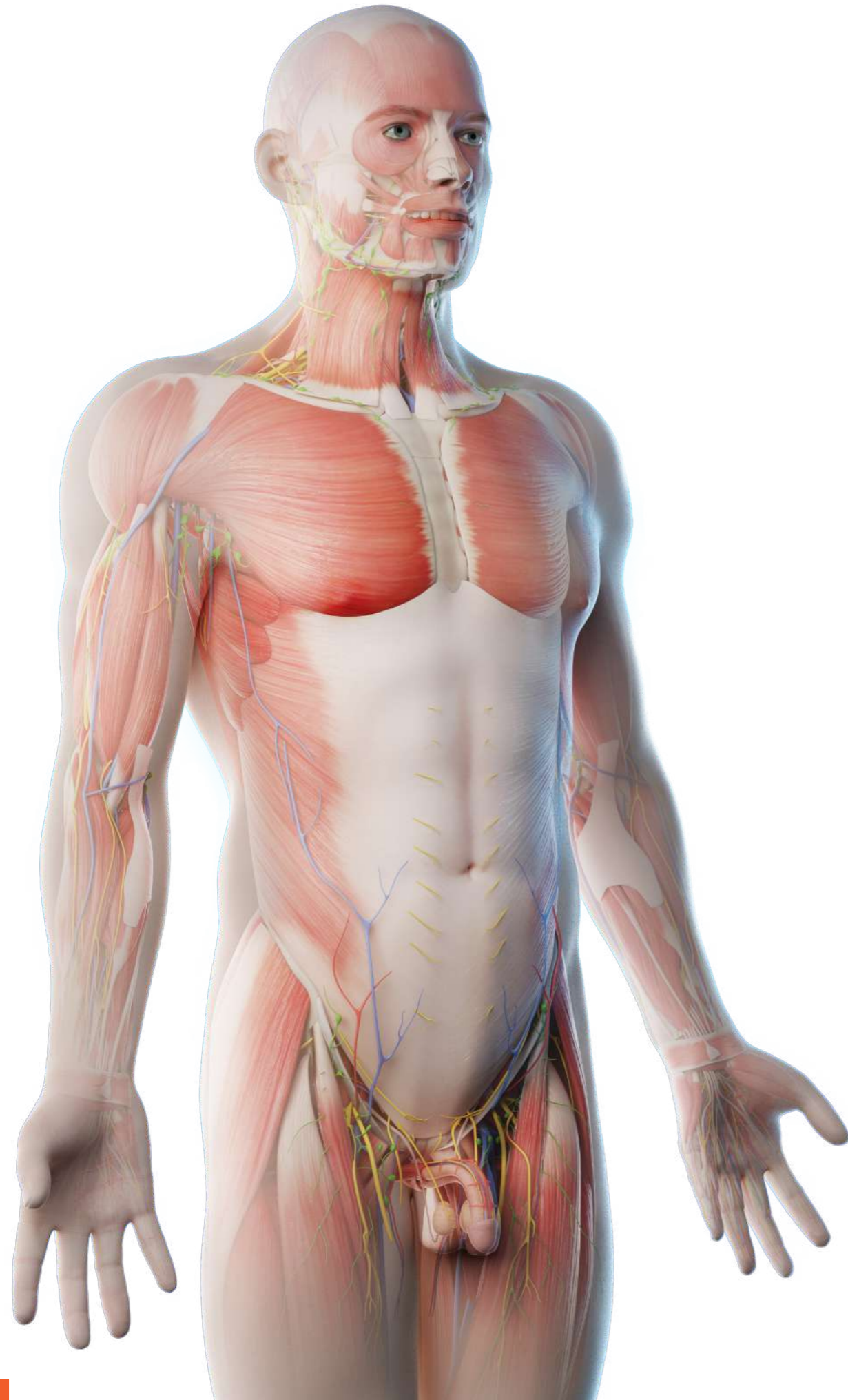
F-35 Head

Penetration Depths



Usage Area: Vaginismus





WHAT IS THE SHOCK WAVE THERAPY?

Therapy with externally administered shock waves is frequently preferred in veterinary medicine, neurology, urology, cardiology, sports medicine, aesthetics and especially orthopedics and physical therapy. An advantages of this system is faster tissue healing by increasing revascularization, collagen synthesis, and oxygenation in the tissue of the application area. AISD(Acquired Immune Deficiency Syndrome), it developing less viscous tissue and mechanically strengthens the tissue.

With the non-invasive principle of the system, the desired treatment can be performed without the need for surgery.

WHAT IS ERECTILE DYSFUNCTION (ED)?

From time to time, all men may have erectile dysfunction for various reasons. It is normal to have problems sometimes with both having and maintaining an erection. Stress, alcohol use, and incompatibility with a partner can sometimes cause problems having or maintaining an erection. However, in some men, the inability to have and maintain an erection becomes a constant state of affairs. In this case, the problem of erection can be considered. This also known as erectile dysfunction, is a medical problem in men having or maintaining an erection for a long time. In other words, this means that it must be a frequently occurring condition to be erectile dysfunction.

WHAT CAUSES ERECTILE DYSFUNCTION?

Erectile dysfunction can be caused by different stressors that are usually experienced during sexual intercourse. However, erection problems due to stress are usually temporary. In order to consider an erection problem medically, this problem must be experienced constantly. In addition, long-term erection problems are usually caused by some problems in the veins that provide blood flow to the penis area. When a sufficient amount of blood does not go into the penis or the blood is not trapped there, it prevents the penis from erection. If the nerves in the penile region are damaged due to certain traumas, it can also be one of the factors causing erection problems. On the other hand, other health conditions such as atherosclerosis (hardening or blockage of the arteries), heart disease, high blood pressure or hyperglycemia due to diabetes can also be among the causes of erectile dysfunction.

There are both physical and psychological aspects of erectile dysfunction in men.

In some cases, these two factors can induce each other, so it can be both. Some risk factors that can obstruct penile erection can be listed as follows:

> The most common age group for erectile dysfunction is over 50 years; therefore, being over 50 is a risk factor for erectile dysfunction.

> Diseases such as diabetes, hypertension, high cholesterol, cardiovascular diseases, and prostatitis can cause erectile dysfunction.

> Smoking, excessive alcohol consumption and drug use are also risk factors for all sexual dysfunctions.

> Being overweight and not exercising sexual dysfunctions.

> Psychological Problems sexual dysfunctions.

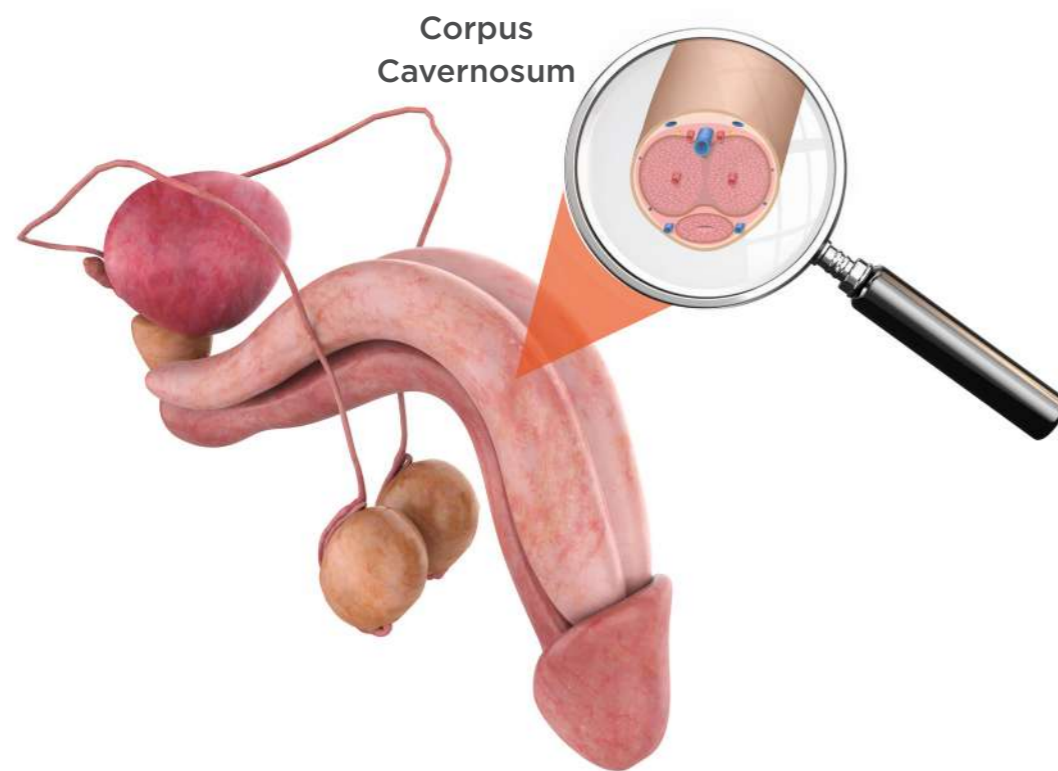


AT WHAT AGES ARE ERECTILE DYSFUNCTIONS OBSERVED?

Erectile dysfunction can be seen at any age. However, its prevalence increases with age. It is most commonly seen after the age of 50. However, some men who exercise regularly and do not smoke or drink alcohol can maintain healthy sexual functionality even at the age of 80.

WHY DOES ERECTILE DYSFUNCTION OCCUR?

The erection of the male sexual occurs when sinusoidal structures in the tissue, called the corpus cavernosum, are filled with blood. Arteries that relax with signals from the central nervous system during sexual intercourse help more blood flow to these sinusoids.



The increase of pressure, as a result of blood filling the penile tissues, stimulates the Tunica albuginea region, which is vital for the continuation of the erection state. This stimulated area regulates the blood flow in the penis stably and ensures the preservation of the erection state. Any physical ailment that prevents this blood filling causes the penis not to erect or to maintain it.

HOW IS ERECTILE DYSFUNCTION TREATMENT PERFORMED WITH ESWT?

Shock waves are performed to 5 different areas of the penis. Shock waves are applied to the base and lateral zones for both sides. The applicator should specially aim to apply shock waves to the areas called Corpus Cavernosum (each of the erectile tissue mass that fills with blood and hardens on both sides of the penis) zones on both sides. It is recommended to apply 300 three shock wave shots for each area and 1500 shots for totally. Depending on the severity of the disease, the treatment can be extended for 12 sessions. Each session takes approximately 20 minutes. Before the procedure, no sedatives are needed. There are no side effects such as pain, ache, swelling, bruising, burning, and irritation during or after the procedure. After the procedure, the patient can return his daily life at the same day.

WHAT ARE THE DIFFERENCES FROM OTHER TREATMENT METHODS?

Current non-surgical treatment methods of erectile dysfunction consist of intracavernosal injections of intravenous vasodilating agents. In these methods, blood flow is accelerated by increasing the width of the vessel. The disadvantages of these treatment methods are that they do not eliminate the pathological factors underlying the erection of the penis. It is generally used before sexual intercourse and the duration of action is very limited. In medical treatment, pills are taken orally and the active ingredients are passed into the blood. This results with some serious side effects especially in men with cardiovascular diseases and in men with taking some cardiac medications. As a local procedure in Modus Focused ESWT treatment, focused shock waves only stimulate blood vessels in the targeted area. In the treatment with focused shock waves of Modus Focused ESWT, the relevant pathological factors are completely eliminated and total recovery is observed even in patients with severe health problems. Although vascular structures are not improved during the other treatment modalities, new healthy vascular formations are the positive results of Modus Focused ESWT treatment. Thus, risky side effects that are more likely to be observed in people with cardiovascular disease are avoided. In addition, as avoided with a local procedure. Modus Focused ESWT is a non-invasive treatment method, any surgical intervention is not performed on the patient. After approximately 20 minutes for each session, the patient continues his daily life.

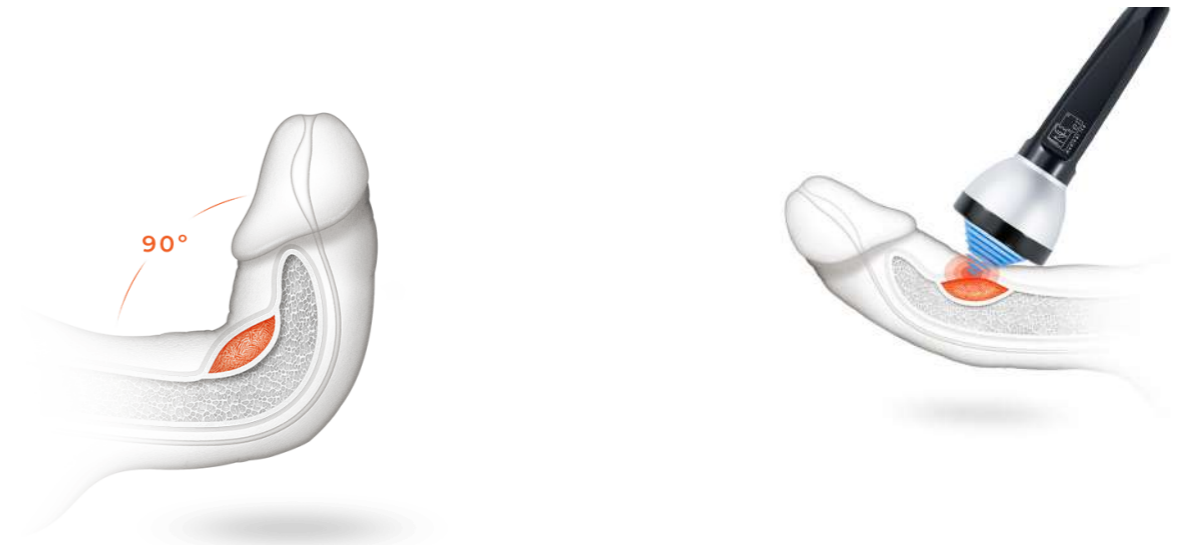
WHAT IS PEYRONIE'S DISEASE (PENILE CURVATURE)?

This condition causes deformity in the penis by the formation of hard plaques on the penis. Peyronie's disease is a change in the structure of the sheath, called tunica albuginea, surrounding the penile tubes (Corpus Cavernosum) and the formation of hard plaques that cause deformities in the penis. Lesions in the penis generally occur on the upper part. This disease is most common between the ages of 40-60.

Penile curvature can be congenital or occur later in life due to various reasons. The basis of the congenital Peyronie's disease is that one of the two spongy tissues, that make the penis erect, does not develop. Thus, the penis becomes curved toward the undeveloped side. However, non-congenital penile curvature is usually seen in individuals over the age of 50. In these cases, Peyronie's disease occurs due to the calcification between the spongy tissue, that makes the penis harden, and the sheath surrounding this tissue. Peyronie's disease is more common in diabetics, smokers, alcohol abusers, and those with hypertension.

SHOCKWAVE (MODUS FOCUSED ESWT) THERAPY FOR PEYRONIE'S DISEASE

In patients treated with Modus Focused ESWT, pain relief and improvement in erectile dysfunction were found. The applied low-intensity shockwaves activate the tissue healing mechanism in the acute phase of Peyronie's plaque and cause the plaque to shrink. In addition to addressing the pain and curvature in the penis, the effects of the treatment also positively impact the sexual lives of the patients suffering from Peyronie's disease by providing quality erections.

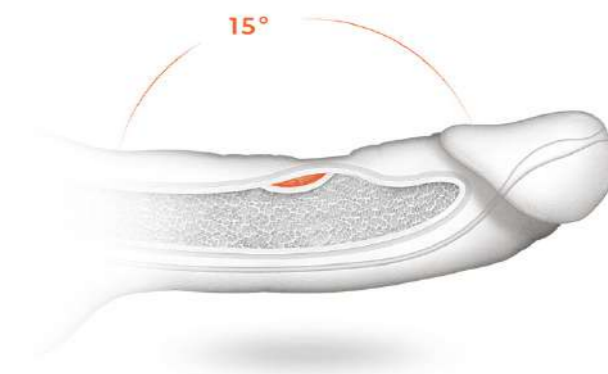


Before Peyronie's Disease Treatment

During Modus Focused ESWT Treatment

APPLICATION FOR PEYRONIE'S DISEASE

Modus Focused ESWT therapy applies low-intensity shock waves to the shaft and crus of the penis with a non-invasive method. As a result, it helps to increase blood flow to these areas of the penis which will improve Peyronie's disease. After the treatment patients continue their daily activities where they left off. Anesthesia and hospitalization are not required. The treatment is applied at least 1 or 2 sessions a week. Depending on age and size of the plaque, 6-24 sessions are required. Each session takes 30-40 minutes.



After Modus Focused ESWT Therapy

WHAT IS PROSTATITIS?

The prostate, located in the lower part of the bladder and in the anterior part of the rectum, is an extremely important organ for the urinary system. Prostatitis, also known as prostate inflammation, refers to the inflammation that occurs in the prostate gland. This causes many problems for men including pain. However, prostatitis is quite simple to treat. Prostate inflammation usually occurs in more than one way. Although some types of prostatitis can be overcome without treatment, other types require treatment. In prostate problems that require treatment, medication is provided to remove the inflammation from the body in a short time.

Prostatitis is mostly seen in men with the age between 30 and 50. However, in men over the age of 50, prostatitis shows itself as an enlarged prostate. The last stage of this problem is prostate cancer. Prostatitis is one of the main health conditions that is experienced by almost every man, depending on age.

WHAT ARE THE TYPES OF PROSTATITIS?

Prostatitis can be seen in four main types. These four types are Chronic Prostatitis/Chronic Pelvic Pain Syndrome (CP/CPPS), Chronic Bacterial Prostatitis, Acute (Sudden) Bacterial Prostatitis and Asymptomatic Inflammatory Prostatitis. Among these four types, chronic pelvic pain syndrome stands out the most.

WHAT IS THE RELATION BETWEEN PROSTATITIS AND ERECTILE DYSFUNCTION?

Due to research, studies, it has been concluded that prostatitis and Erectile Dysfunction have the similar etiologic factors. Accordingly, inflammations that cause erection problems can also lead to prostatitis. In other words, men who have prostatitis problems can also have erection problems. A man with chronic prostatitis can also have Erectile Dysfunction due to the disease or medical treatments.

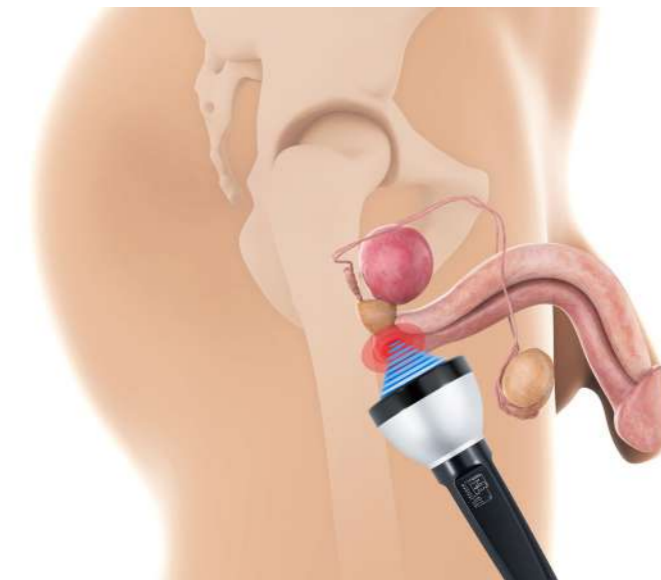
After radical surgeries performed for prostate cancer or rectal cancer, the erectile nerves can be damaged. As a result, serious erection problems can be seen after these procedures.

SHOCKWAVE (MODUS FOCUSED ESWT) TREATMENT FOR PROSTATITIS

Scientific studies have shown that shockwave therapy diminishes pain and causes 80% improvement in sexual functions by providing new vein formation, increasing the blood supply, preventing inflammation, reducing muscle contractions, and impacting nerve impulses.

APPLICATION FOR PROSTATITIS

Modus Focused ESWT treatment is applied to the area called the perineum (between the testes and anus). Anesthesia and hospitalization are not required. At least 6-12 sessions are applied twice a week. A session takes approximately 20 minutes.



LOW-INTENSITY SHOCKWAVE THERAPY

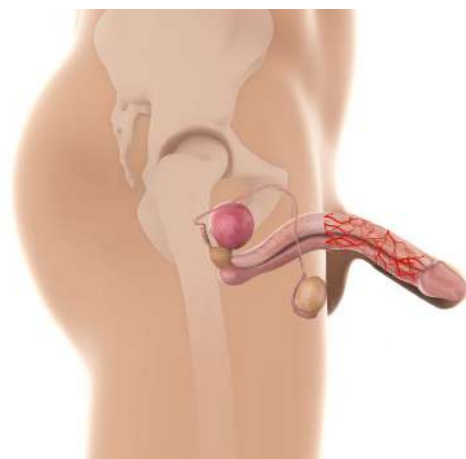
In low-intensity shockwave therapy, shockwaves are applied to an anatomical region, causing mechanical stress and micro trauma. This mechanical stress and micro trauma lead to the formation of angiogenic factors. Thus, it induces a series of biological reactions that increase blood flow and trigger the neovascularization of tissue.



LESS VESSEL/POOR BLOOD CIRCULATION (BEFORE TREATMENT)



INCREASE IN VESSEL NUMBER (DURING TREATMENT)



MORE BLOOD VESSELS/ MORE BLOOD CIRCULATION (AFTER TREATMENT)



WHY MODUS FOCUSED ESWT

> In the treatment with focused shock waves of Modus Focused ESWT, the relevant pathological factors are completely eliminated and complete recovery is observed even in patients with severe health problems.

> Like in other treatment methods, vessel width is not increased; new vessel formation is provided with Modus Focused ESWT. Thus, risky side effects that are more likely to be observed, especially in patients with cardiovascular disease, are avoided.

> Since Modus Focused ESWT is a non-invasive treatment method, surgical intervention is not performed on the patient. After approximately 20 minutes of the sessions, the patient continues their daily life.

> The Modus Focused ESWT system is a specially designed device for penile applications in this procedure. The Modus Focused ESWT system is designed to provide maximum efficiency even from the lowest rhythms of shock waves. Unlike other devices in the market, this system has adjustable electro frequency and the number of shocks can be adjusted specifically for each patient. Therefore, Modus Focused ESWT treatments give much more effective results in a short time.

WHAT IS VAGINISMUS?

Vaginismus is the involuntary contractions of the vaginal muscles due to the pain or inability to have sexual intercourse.

Because of subconscious fears and false sexual information, the pelvic muscles in the outer 1/3 of the vaginal canal contract involuntarily (that is, out of the person's own control) as a result of the body's "self-protection mechanism"; therefore, sexual intercourse becomes impossible.

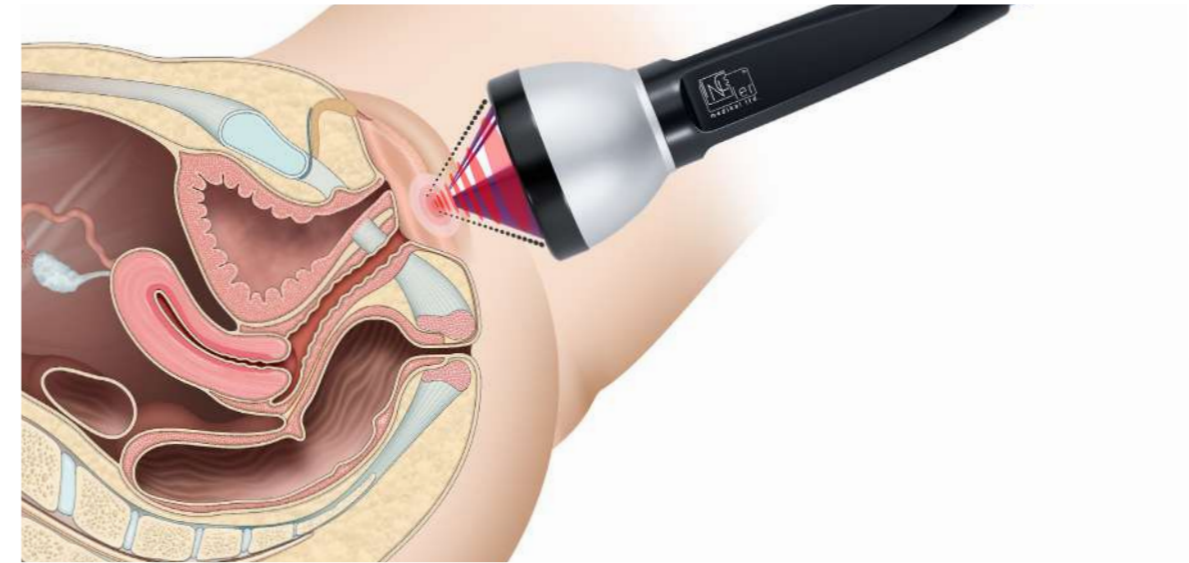
Women with vaginismus problems describe contractions not only at the vaginal entrance but also in many parts of the body such as the abdomen, waist, back, and legs. For this reason, after attempting intercourse, they may feel severe muscle pain in these areas. Which may be related to the degree of vaginismus.

SHOCK WAVE (MODUS FOCUSED ESWT) THERAPY FOR VAGINISMUS

Modus Focused ESWT improves the quality for life of women by treating health problems such as severe contractions and spasms in the vagina that make intercourse almost impossible, intense feeling of having to close oneself despite the desire for sexual intercourse, partial contractions even if sexual intercourse is provided, and discomfort, pain, or burning in the vagina during sexual intercourse.

Each treatment session is 20 minutes. After 6 sessions, the natural pleasure of the woman recovers.

Modus Focused ESWT provides permanent recovery by accelerating the formation of new vessels.



- > According to research studies, up to 75% of women experience discomfort, pain and burning during sexual intercourse throughout their lives.
- > Modus Focused ESWT is an effective and fast method.
- > After the treatment, the patient continues her daily life at the same day.

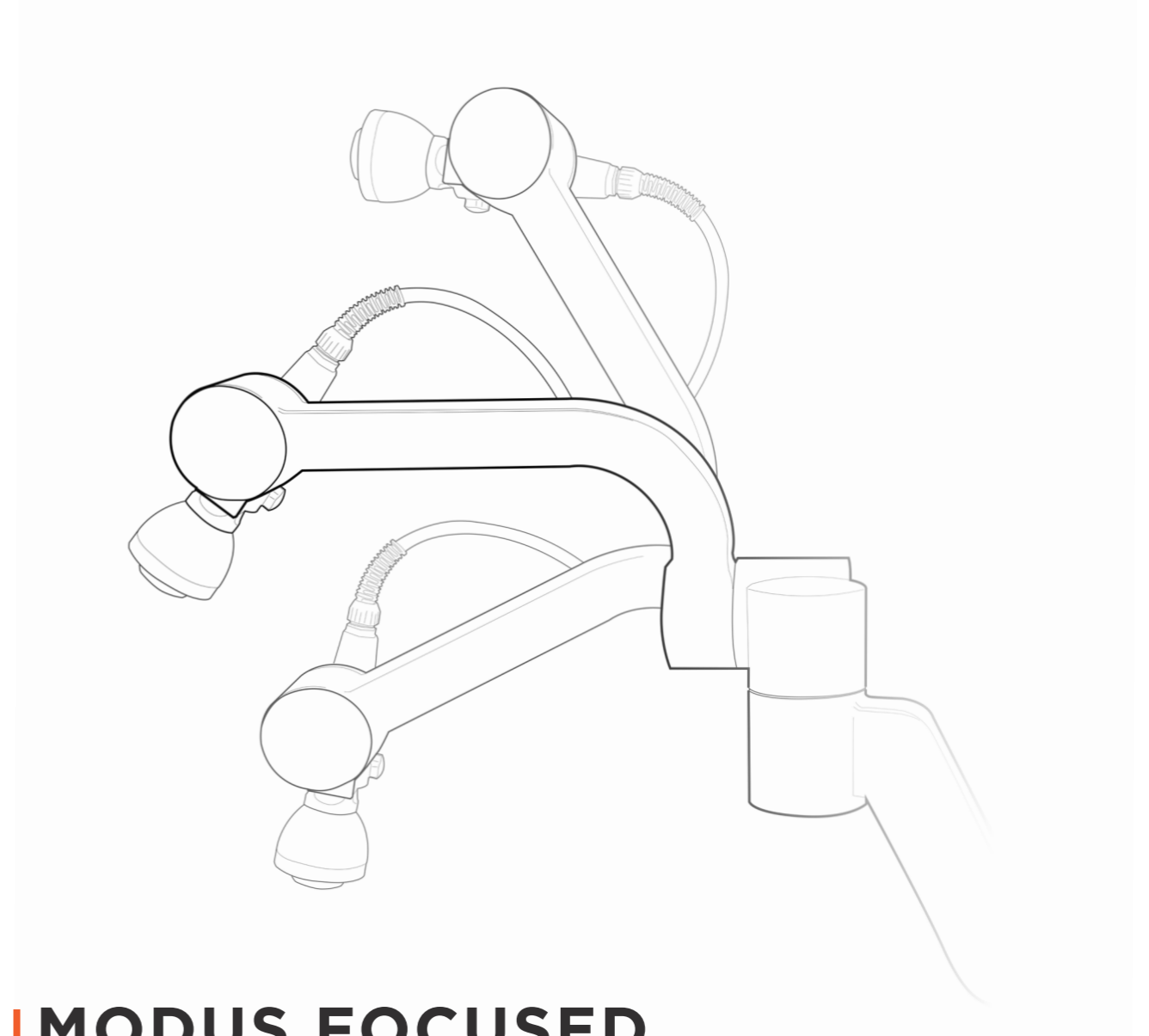
ADVANTAGES OF MODUS FOCUSED ESWT

Modus Focused ESWT is an ideal treatment for the following symptoms;

- > Decreased vaginal lubrication
- > Decreased sexual arousal and difficulty achieving orgasm
- > Vulvar Vestibulitis Syndrome
- > Chronic Pelvic Pain Syndrome



Modus Focused ESWT Arm System
Arms system is an optional feature.



MODUS FOCUSED ARM SYSTEM

An optional arm that can be added to Modus Focused ESWT provides ease of movement to the physician. This way the physician does not have to hold the handpiece for a long time during the treatment. In addition, it also minimizes the physician's contact with the patient. The arm can be moved in 3 axes. There are two buttons on the device for the arm.

With help of these buttons, the device can move up and down. Therefore, positioning can be made according to the patient and their chair. The angle of the arm can also be adjusted manually.

ERECTILE DYSFUNCTION TREATMENT IN 6 STEPS



1. APPLY ULTRASONIC GEL



2. ON the LEFT SIDE 1 AREA,
PROXIMAL PENILE SHAFT
(the root of the penis) APPLY
SHOCK WAVES



3. ON the RIGHT SIDE, 1 AREA
PROXIMAL PENILE SHAFT (the
root of penis) APPLY SHOCK
WAVES

4. ON the LEFT SIDE 2 AREA,
MIDDLE PENILE SHAFT (body
area of the penis) APPLY
SHOCK WAVES



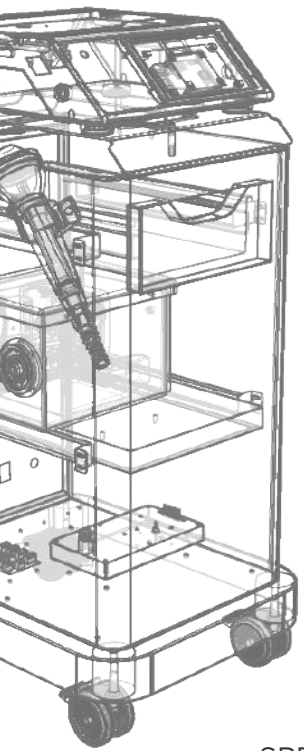
5. ON the RIGHT SIDE 2 AREA,
MIDDLE PENILE SHAFT (body
area of the penis) APPLY
SHOCK WAVES



6. ON THE RIGHT SIDE 3
AREA, DISTAL PENILE SHAFT
(distal areas of the penis)
APPLY SHOCK WAVES

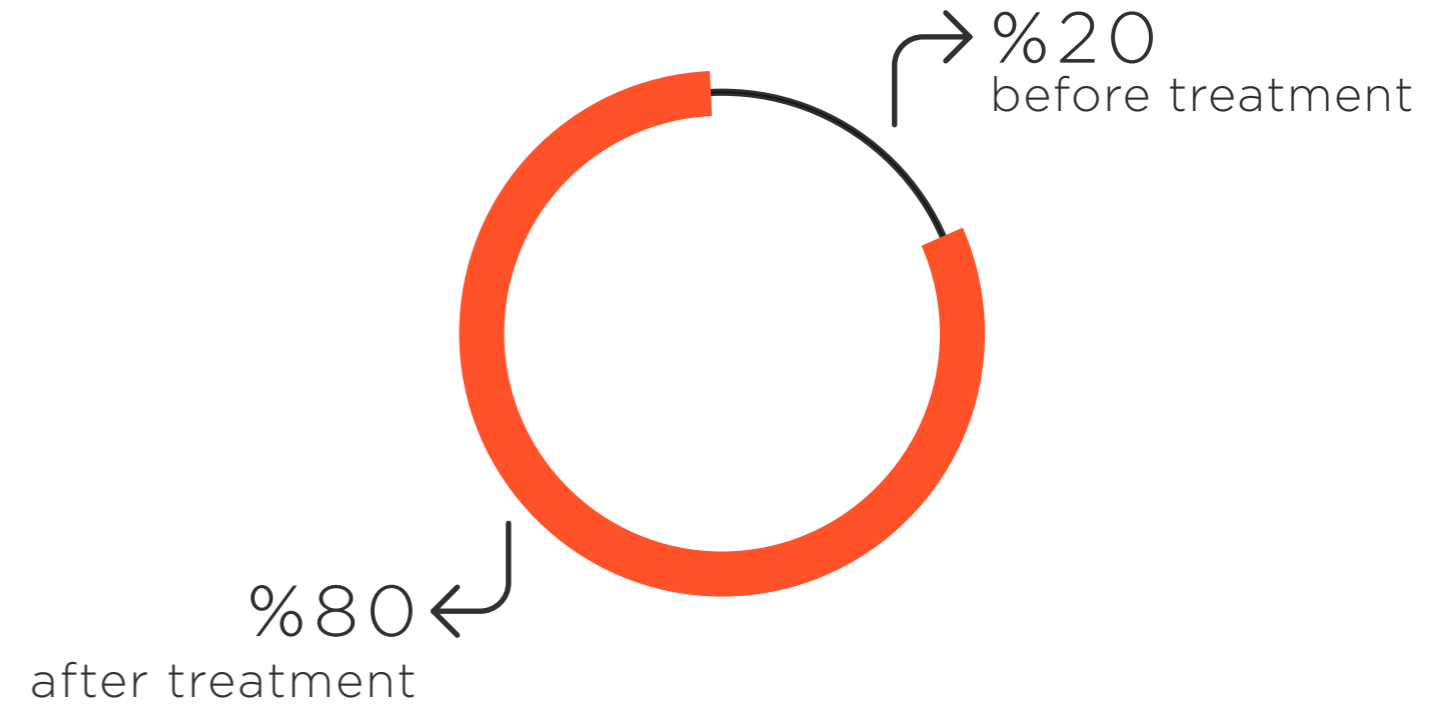


Technical Specifications



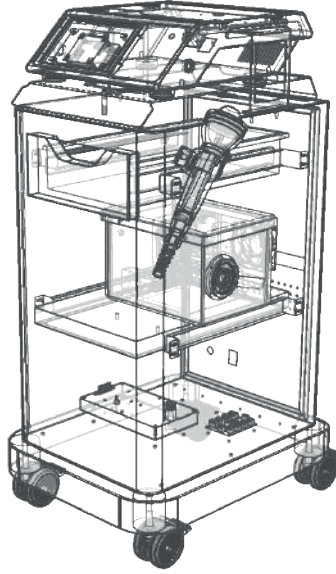
MANUFACTURER	INCELER MEDIKAL SAĞLIK HIZ. SAN. TIC. LTD. ŞTI.
MODEL	Modus Focused ESWT
QUALITY AND CLASSIFICATION	According to EN 60601-1 Class I Type B According to EN 93/42 MDD Class IIb FDA Registered Manufacturer IEC 60601-1 IEC 60601-1-2
USER MODES	Continuous, Burst, Auto
APPLIED POWER	0,01 mJ/mm ² - 0,25 mJ/mm ² with 0.01 steps
WORKING PRINCIPLE	Electrohydraulics(Focused)
ELECTRODE LIFESPAN	50K - 70K Shock
FREQUENCY	1 - 4 Hz
DISPLAY	Colored Touch Screen
TREATMENT START/STOP	Main Unit Button, Handpiece Button (Optional), Foot Pedal (Optional)
MEMORY	3 User Defined Treatment Protocol
TREATMENT PROTOCOL	20-30 Units
USER PASSWORD	
WEIGHT	55 kg
DIMENSIONS (HxWxG)	116 mm x 387 mm x 316 mm (Main Unit) 450x350x930x mm (Trolley including)
SPECIAL TREATMENT PARAMETER SELECTION AND PROTOCOL SELECTIONS	Yes
VOLTAGE & FREQUENCY	110 - 240 ±% 10 VAC & 50/60 Hz
OPERATING ENVIRONMENT	10° C ≤ Temperature ≤ 40° C 30% Rh ≤ Humidity ≤ 80% Rh
STORAGE ENVIRONMENT	-10° C ≤ Temperature ≤ 50° C 20% Rh ≤ Humidity ≤ 90% Rh
WARRANTY	24 Months

AVERAGE SUCCESS RATE



ADVANTAGES AND PERFORMANCE

- > During treatment, medication, prosthesis, etc. are not used. This method of treatment is completely non-invasive.
- > After Modus Focused ESWT treatment, patients no longer need the medical the treatments which they may have previously undergone.
- > Modus Focused ESWT treatment success is over 80%. The success rate exceeds 60% in severe patients who do not even respond to medications.
- > Unlike other treatment methods, it does not need to be used before every sexual intercourse. It does not require medication such as anesthesia or sedatives during and after the procedure. After the procedure, the patient continues their daily life.
- > It has been observed that Modus Focused ESWT treatment increases blood vessels and penis size.
- > Modus Focused ESWT therapy offers a permanent treatment by completely removing the occlusion in the vessels and accelerating the formation of new blood vessels.



Technology For Health

WWW.INCELERMEDIKAL.COM



İnceler Medikal Ltd.
İvedik OSB Mah. 1472. Cad.
No: 120 Yenimahalle
Ankara/Türkiye

tel: +90 312 255 3346
sales@incelermedikal.com

MODUS FOCUSED